



Rothwell Close, Sutton In Ashfield, NG17

£1,250 Per Month

\*Deposit Free Option Available\*

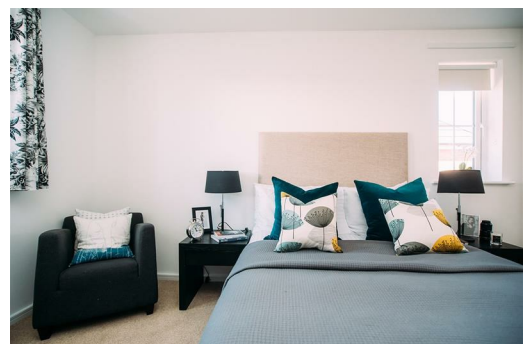
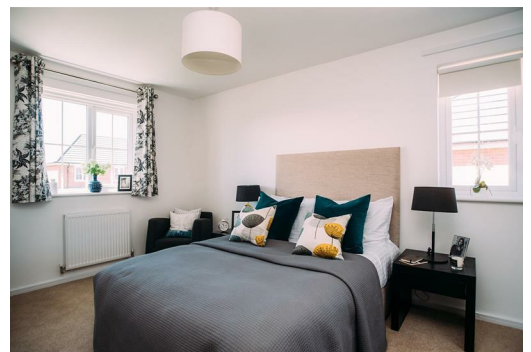
We proudly offer a beautiful collection of 2 to 4 bedroom homes in the market town of Sutton in Ashfield. With an abundance of local amenities, schools for all ages and great transport links, Portland Field is the ideal spot for those searching for a tranquil retreat with all the conveniences of modern living right on the doorstep.

The Weaver:

- Three bedroom modern property
- Stylish open-plan living room with French doors leading to rear garden
- Fully fitted modern kitchen/dining room with integrated white goods
- Two spacious double bedrooms and a third bedroom that can also be used as an office
- Modern family bathroom with separate shower cubicle decorated with Porcelanosa tiles



16 Rothwell Close, Sutton In Ashfield, NG17 1DL



Energy Efficiency Rating		Environmental Impact (CO <sub>2</sub> ) Rating	
Current	Potential	Current	Potential
95	95	B	B
92	92	C	C
89	89	D	D
86	86	E	E
83	83	F	F
80	80	G	G